

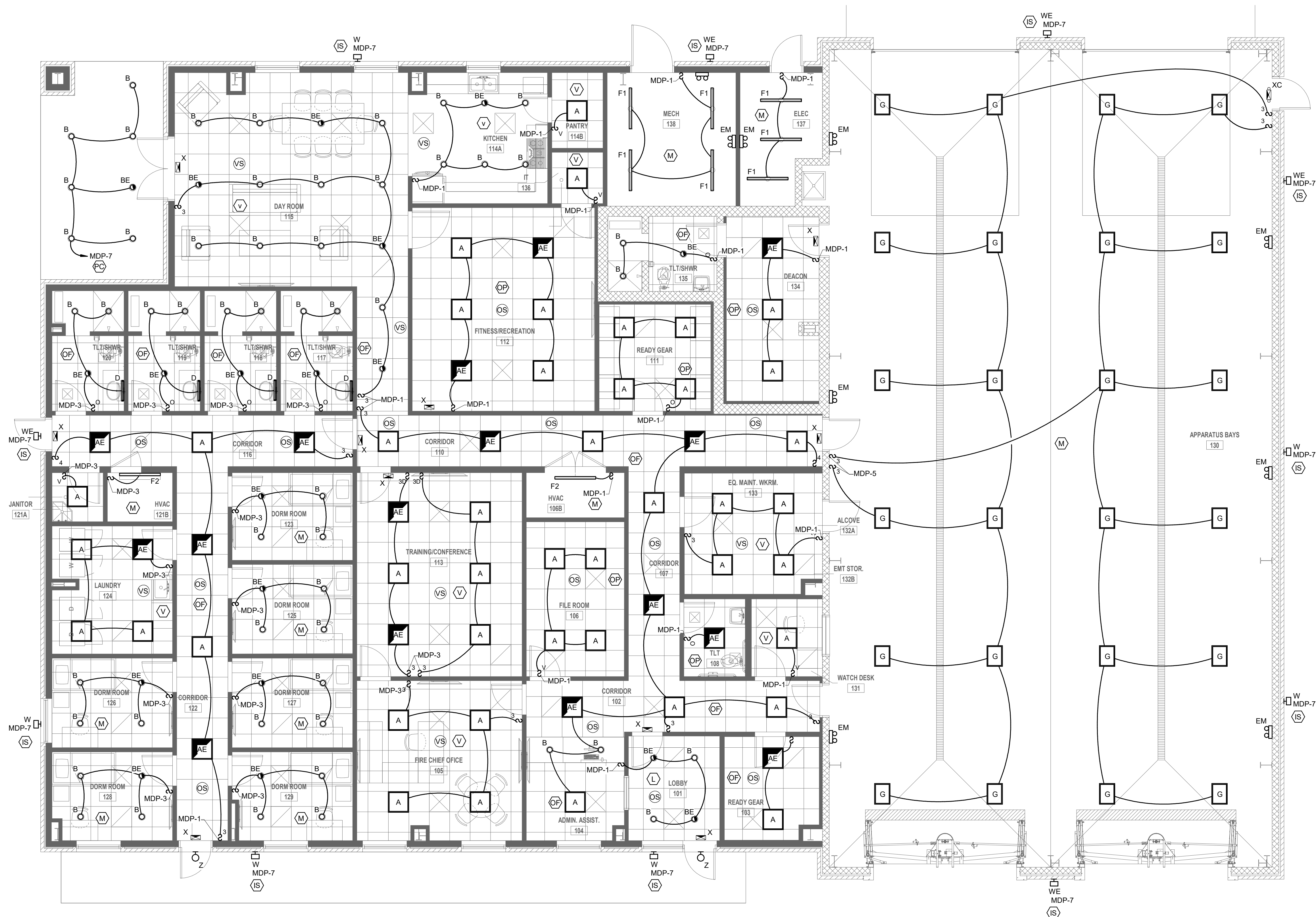
p:\active projects\25-035 stantec new fire station no. 3\25-035 ver1\25-035 tb - stantec_arch_d_vert

D

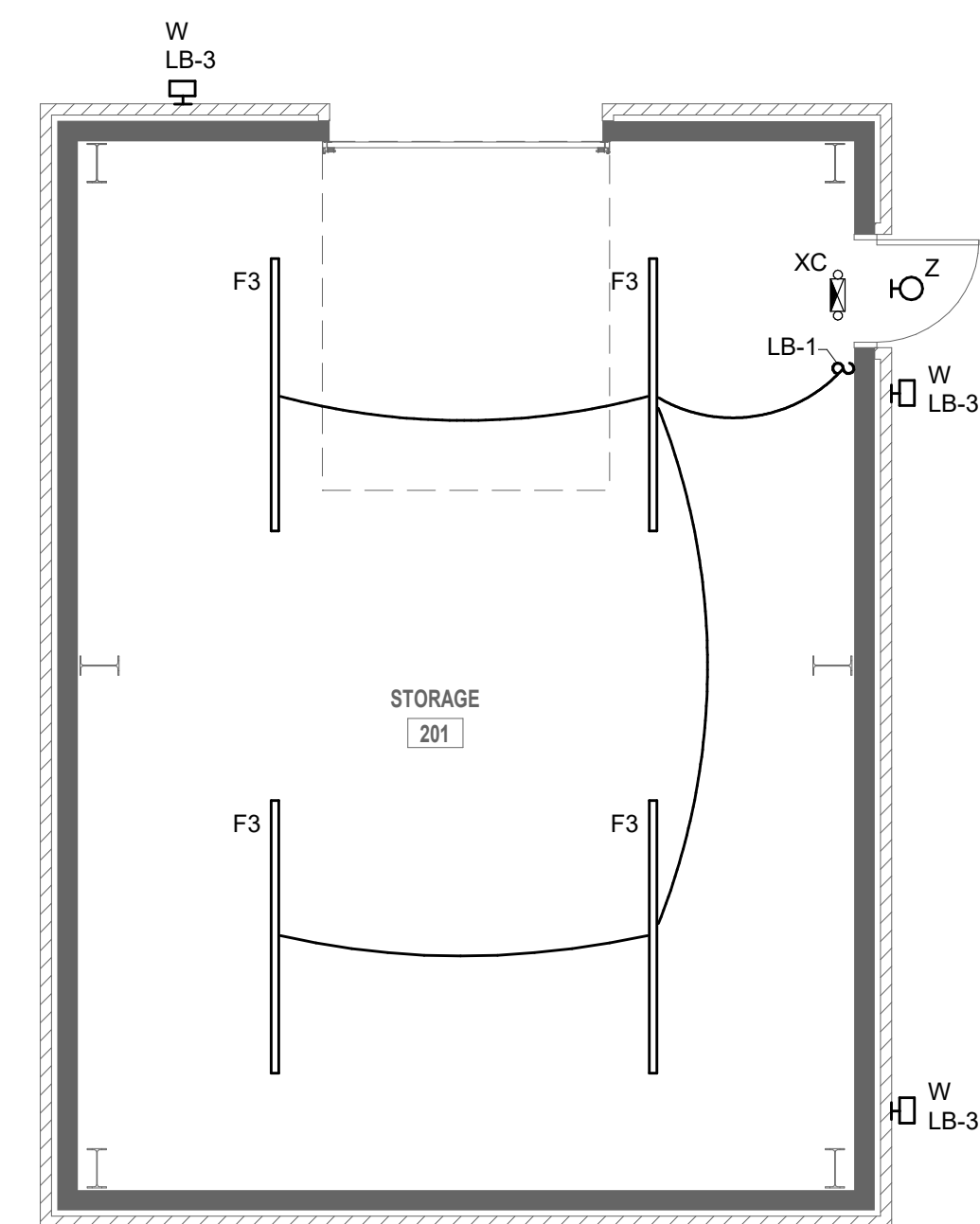
C

B

A



1 ELECTRICAL LIGHTING PLAN - MAIN BUILDING
3/16" = 1'-0"



2 ELECTRICAL LIGHTING PLAN - STORAGE BUILDING
3/16" = 1'-0"

LIGHTING CONTROL DESIGN INTENT NOTES:

ALL LIGHTING CONTROLS SHALL COMPLY WITH EICC 2021 C405.2

EXTERIOR LIGHTING CONTROLS

EICC 2021 C405.2.7

PC LIGHTING SHALL BE CONTROLLED VIA PHOTOCELL.

IS LIGHTING SHALL BE CONTROLLED VIA INTEGRAL PHOTOCELL/MOTION SENSOR SUCH THAT THE LIGHTING DIMS TO NOT LESS THAN 50% WHEN MOTION HAS NOT BEEN DETECTED FOR 15 MINUTES OR MORE.

IS2 LIGHTING SHALL BE CONTROLLED VIA INTEGRAL PHOTOCELL/MOTION SENSOR SUCH THAT THE LIGHTING DIMS TO NOT LESS THAN 50% WHEN MOTION HAS NOT BEEN DETECTED FOR 15 MINUTES OR MORE. ADDITIONALLY LIGHTING SHALL BE PROGRAMMED SUCH THAT ALL FIXTURES IN ZONE INDICATED ILLUMINATE TO 100% WHEN ANY FIXTURE DETECTS MOTION.

INTERIOR LIGHTING CONTROLS

V C405.2.1.1 LIGHTING SHALL BE CONTROLLED VIA VACANCY SENSOR FOR ON/OFF OPERATION. PROVIDE DIMMER IF INDICATED.

OP C405.2.1.1 LIGHTING SHALL BE CONTROLLED VIA OCCUPANCY SENSOR SUCH THAT LIGHTING WILL AUTOMATICALLY ILLUMINATE TO 50% UPON MOTION DETECTION AND MAY BE MANUALLY ADJUSTED TO 100% 20-MINUTE OPERATION.

OP LIGHTING SHALL BE CONTROLLED VIA OCCUPANCY SENSOR SUCH THAT LIGHTING WILL AUTOMATICALLY ILLUMINATE TO 100% UPON MOTION DETECTION. 20-MINUTE OPERATION.

OS C405.2.1.3 OPEN OFFICE LIGHTING SHALL BE CONTROLLED IN ZONES NOT TO EXCEED 800 SQ. FT. LIGHTING IN EACH ZONE SHALL BE CONTROLLED VIA OCCUPANCY SENSOR TO AUTOMATICALLY ILLUMINATE TO 100% UPON MOTION DETECTION. 20-MINUTE OPERATION.

TC C405.2.2 LIGHTING SHALL BE CONTROLLED VIA LIGHTING CONTROL PANEL (LCP) TIMECLOCK AND OCCUPANCY SENSOR AFTER HOURS. PROGRAM LCP TO HOLD LIGHTING ON DURING BUSINESS HOURS.

M NO AUTOMATIC CONTROL REQUIRED. PROVIDE MANUAL CONTROL AS INDICATED.

D C405.2.4.1 PROVIDE DAYLIGHT HARVESTING CONTROLS. PROVIDE PRIMARY AND SECONDARY ZONES AS INDICATED ON PLANS.

L LOBBY SHALL BE CONTROLLED VIA ROOM CONTROLLER PROGRAMMABLE TIMECLOCK AND OCCUPANCY SENSOR AFTER HOURS.

ELECTRICAL LIGHTING GENERAL NOTES:

- ALL TYPE "Z" FIXTURES SHALL BE MOUNTED UNDER CANOPY.

Consultant

Design Phase Acceptance

Permit/Seal

Client/Project
CITY OF NATCHITOCHES

NEW FIRE STATION NO. 3

NATCHITOCHES, LOUISIANA

Project No.: 222706059

File Name: 25-035 TB - STANTEC_ARCH_D_VERT

Scale:

Dwn. Dgn. Chkd. 2025.09.26
YYYY-MM-DD

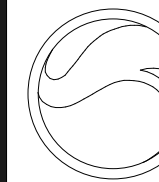
Title

ELECTRICAL LIGHTING PLAN

Revision: Sheet: of

Drawing No. **E400**

Stantec



Stantec (Formerly) Bradley, Beavert & Associates)
1200 Brickyard Lane, Suite 400
Baton Rouge, LA 70802
Tel: 225-765-7400
www.stantec.com

Copyright Reserved

The Contractor shall verify and be responsible for all dimensions. DO NOT scale the drawing. The Contractor shall verify and be responsible for all dimensions. DO NOT scale the drawing. The Contractor shall verify and be responsible for all dimensions. DO NOT scale the drawing.



THOMPSON LUKE & ASSOCIATES, L.L.C.
10705 Rieger Road., STE 101 Baton Rouge, LA 70809
(225)293-9474 | www.tlaeng.com | office@tlaeng.com
TLA PROJECT # 25-035
Frank Saville Thompson - License No. 28854
London David Burns - License No. 46484

